

# Vang Spanner – for base with integrated spanner pivot

For mast plugs/bases that have a spanner pivot hole built in, such as the Keith Deed base, the Vic Scholes base and the Goodall base.

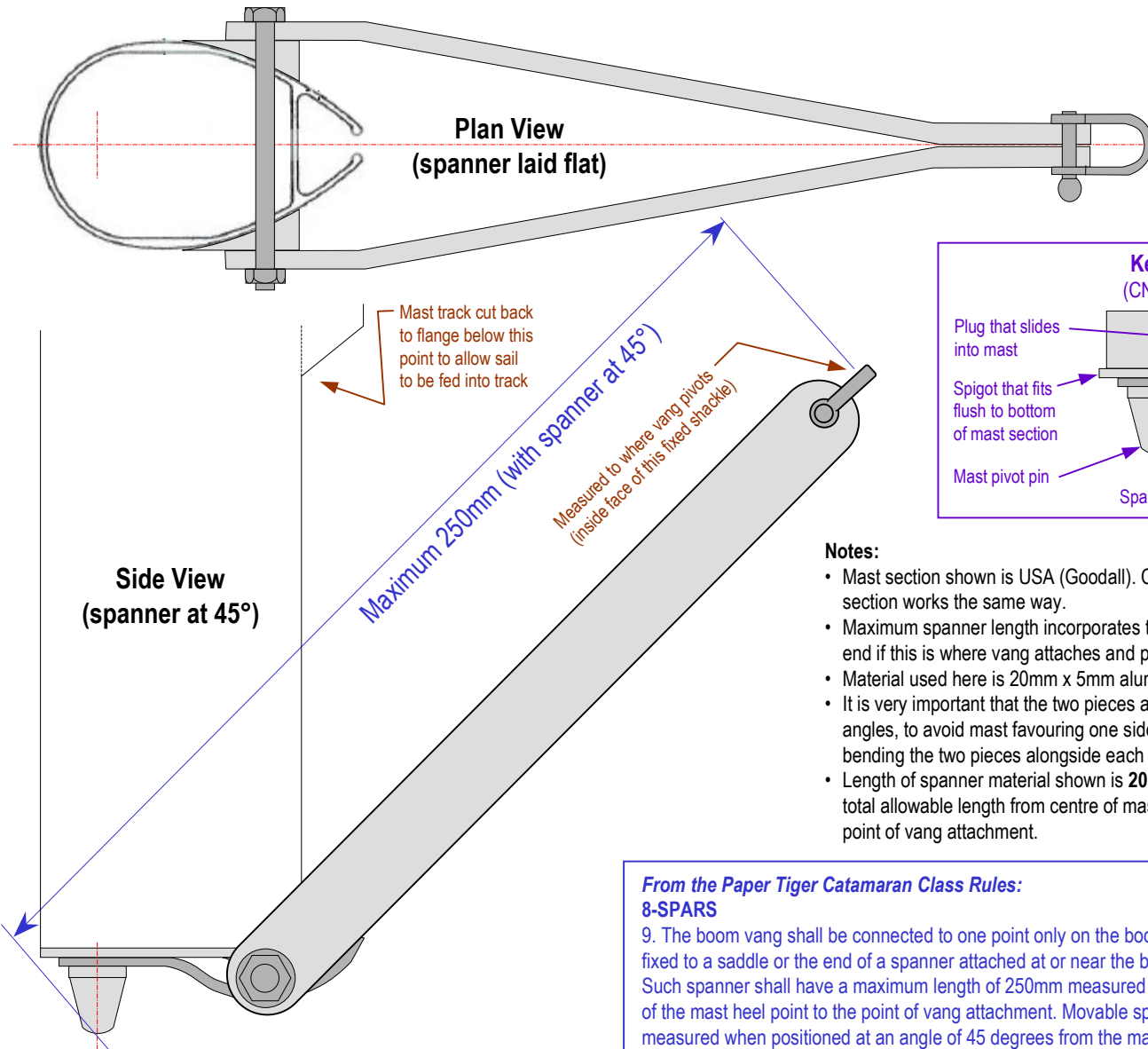


Note: Dimensions are typical only.

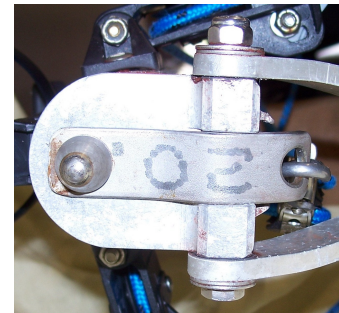
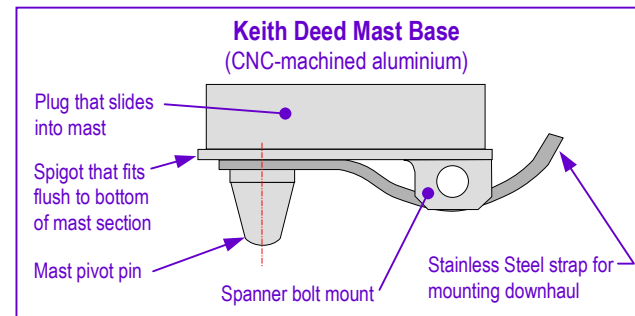
DRN: David Stumbles	CHKD: Terry Valder	REV. No: 0	REV. DATE:
DATE: 26-05-2009	SCALE: NTS	© Paper Tiger Catamaran International Association (PTCIA)	

For Paper Tiger Catamaran assistance & suggestions for these Guides contact PTCIA Secretary David Stumbles on +61 (0) 400 476 449 or [ptcia@papertigercatamaran.org](mailto:ptcia@papertigercatamaran.org) or visit [www.papertigercatamaran.org](http://www.papertigercatamaran.org)

File: Guide - Vang Spanner - through base.ppt



^ Vic Scholes Mast Base



^ Keith Deed Mast Base (bottom)

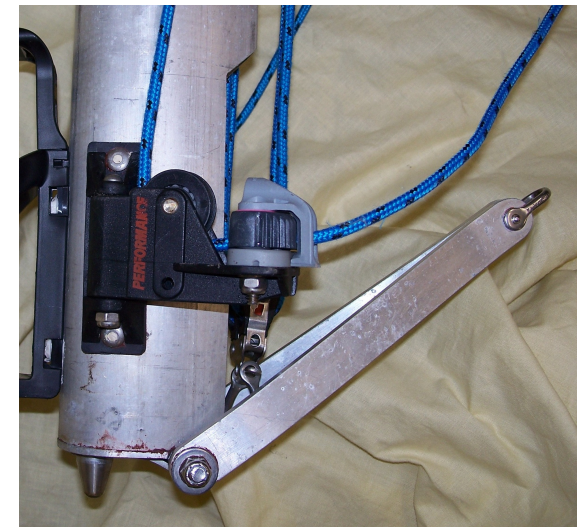
### Notes:

- Mast section shown is USA (Goodall). Chinese (PT Star) section works the same way.
- Maximum spanner length incorporates the shackle on the end if this is where vang attaches and pivots from.
- Material used here is 20mm x 5mm aluminium.
- It is very important that the two pieces are identical in bend angles, to avoid mast favouring one side. Achieve this by bending the two pieces alongside each other in the vice.
- Length of spanner material shown is **200mm** to fit within total allowable length from centre of mast heel point to point of vang attachment.

### From the Paper Tiger Catamaran Class Rules:

#### 8-SPARS

9. The boom vang shall be connected to one point only on the boom and may be fixed to a saddle or the end of a spanner attached at or near the base of the mast. Such spanner shall have a maximum length of 250mm measured from the centre of the mast heel point to the point of vang attachment. Movable spanners shall be measured when positioned at an angle of 45 degrees from the mast.



^ Keith Deed Mast Base & aluminium spanner (USA mast)